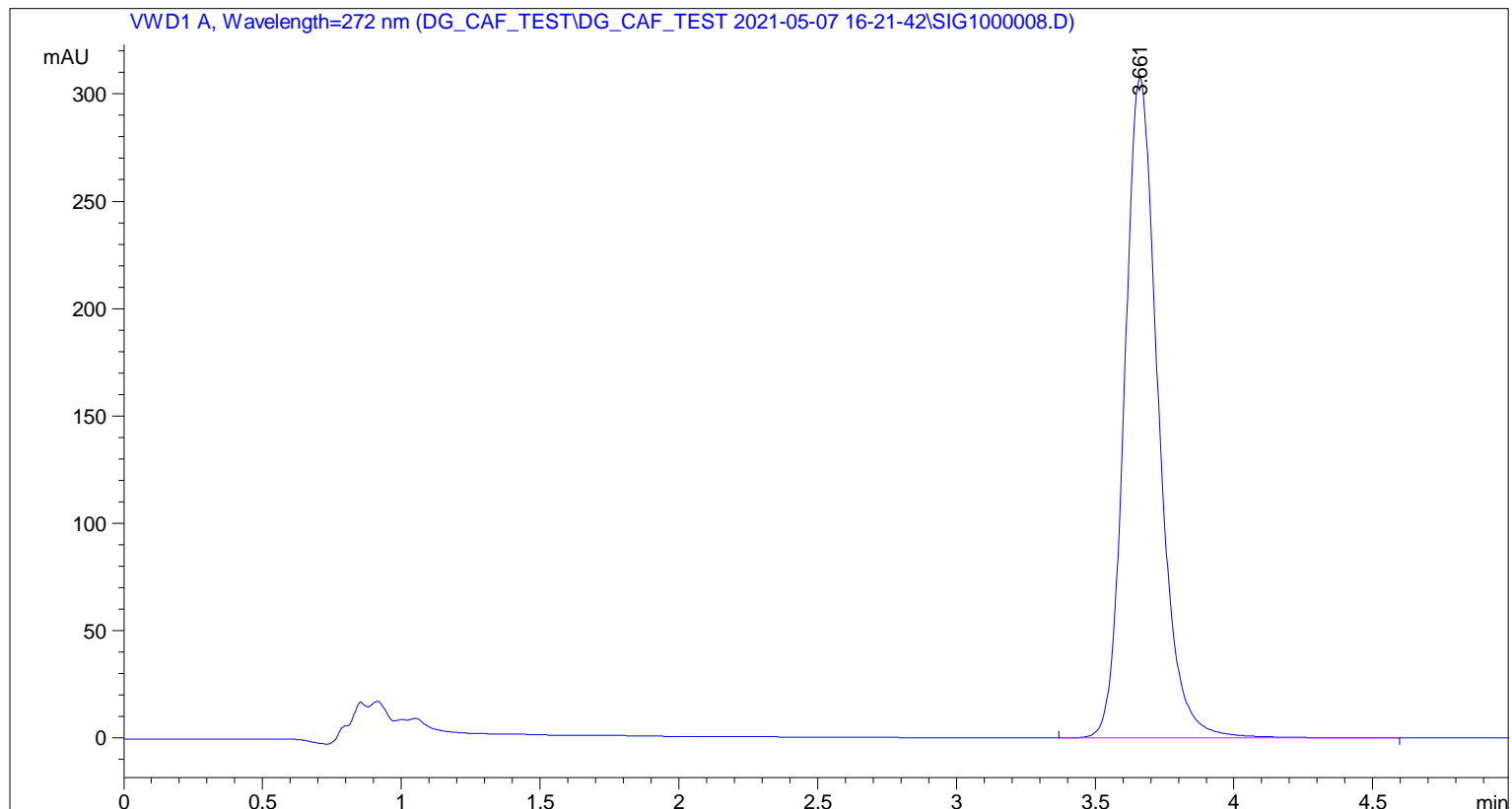


Sample Name: Caffeine std

```

=====
Acq. Operator   : DG                      Seq. Line :    8
Acq. Instrument : Instrument 2            Location  : Vial 1
Injection Date  : 5/7/2021 5:12:50 PM    Inj       :    1
                                           Inj Volume: 20.0 µl
Different Inj Volume from Sequence !    Actual Inj Volume : 10.0 µl
Acq. Method    : C:\CHEM32\2\DATA\DG_CAF_TEST\DG_CAF_TEST 2021-05-07 16-21-42\DG-CAF.M
Last changed   : 5/7/2021 4:35:49 PM by DG
Analysis Method : C:\CHEM32\2\METHODS\DG-CAF.M
Last changed   : 5/20/2021 4:19:55 PM by DG
                (modified after loading)
Method Info    : UV Caffeine method
    
```



External Standard Report

```

Sorted By      : Signal
Calib. Data Modified : Thursday, May 20, 2021 4:17:07 PM
Multiplier:    : 1.0000
Dilution:     : 1.0000
Do not use Multiplier & Dilution Factor with ISTDs
    
```

Signal 1: VWD1 A, Wavelength=272 nm

RetTime [min]	Type	Area mAU*s	Amt/Area [ppm]	Amount	Grp	Name
3.661	BB	2601.11768	1.93386e-2	50.30192		Caffeine

Totals : 50.30192

Sample Name: Caffeine std

=====
*** End of Report ***