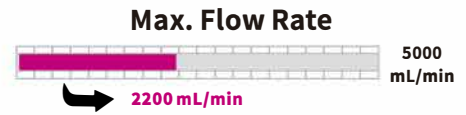
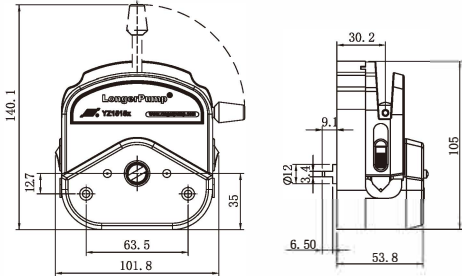


Easy-load Pump Head



YZ1515x, YZ2515x

Classic design, simple operation, wide flow range.

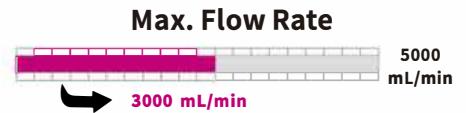


PPS housing
(Excellent chemical resistance)



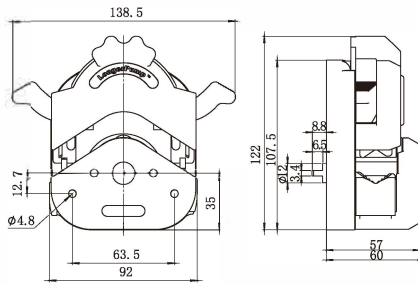
PESU

YZII15, YZII25



Patented Design
Patent Number: 200620026529.1

Based on the classic design of YZ1515x/YZ2515x, YZII15/YZII25 have a special tubing retention linkage which makes tubing loading easily and rapidly. YZII25 accepts more suitable tubing than YZ2515x and provides a wider flow range.



PESU

Tubing Loading Comparison



Tubing clamber needs to be lifted manually
YZ1515X/YZ2515X



Tubing clamber can be automatically opened
YZII15/YZII25

Model	Product Code	Roller Number	Roller Material	Housing Material	Speed (rpm)	Tubing	Max. Flow Rate (mL/min)	Weight (kg)
YZ1515x-A	05.01.52A	3	Stainless steel	PESU	≤600	13" 14" 19" 16" 25" 17" 18"	2200	0.4
YZ1515x-B	05.01.52B	6		1450				
YZ1515x-C	05.01.52C	3		2200				
YZ1515x-D	05.01.52D	6		1450				
YZ2515x-A	05.01.53A	3		PESU		15" 24"	1600	
YZ2515x-C	05.01.53C			PPS				
YZII15	05.01.55A	3	Stainless steel	PESU	≤600	13" 14" 19" 16" 25" 17" 18"	2200	0.35
YZII25	05.01.56A						15" 24" 35" 36"	