

## C1000 Touch™ Thermal Cycler

The C1000 Touch thermal cycler provides superb thermal performance for fast, reliable results. This fully modular platform supports interchangeable reaction modules, including two optical modules for real-time PCR, that swap in seconds without requiring tools. Equipped with a large state-of-the-art touch screen, the C1000 Touch cycler offers a choice of programming methods, including graphical and automatic (using the protocol autowriter).

- Interchangeable reaction modules, including 5-color CFX96™ optical, 4-color CFX384™ optical, gradient-enabled dual 48/48-well fast, gradient-enabled 96-well fast, gradient-enabled 96-deep well, and gradient-enabled 384-well reaction modules
- USB ports that support peripherals, such as storage device and mouse
- Optional PC control and networking capability for up to 32 systems enable the ultimate in high throughput

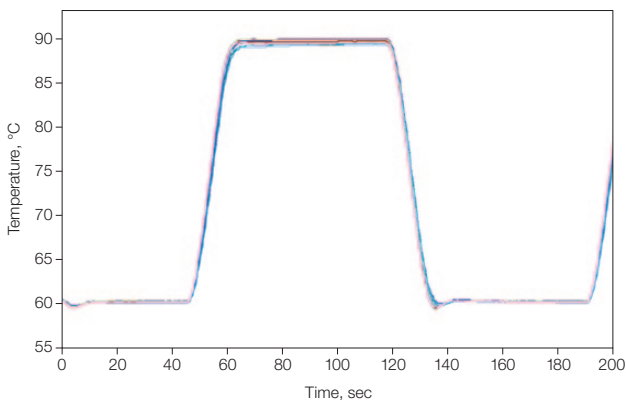


### Specifications

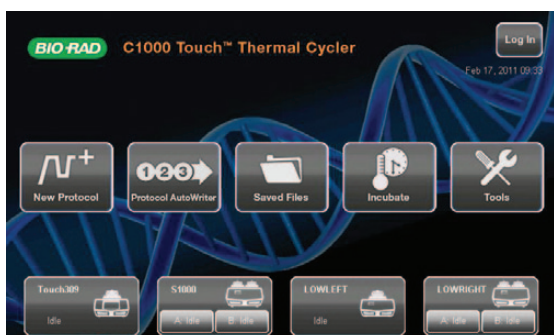
<b>Thermal Cycler</b>				
Input power	Up to 850 W, maximum	Programming options	Step-based graphical and automatic	
Frequency	50–60 Hz, single phase	Security features	Optional log-in required mode for regulated environments	
Display	8.5 in. LCD display and touch screen	Reporting	Exportable run logs, system error logs	
Ports	5 USB A, 1 USB B	Onboard software	Windows CE 6.0	
Fuses	Two 10 A, 250 V, 5 x 20 mm	PC compatibility	Windows XP or higher	
Memory	>1,000 typical programs onboard; unlimited with USB flash drive	USB peripheral compatibility	Mouse, USB flash drive, bar code reader	
Dimensions (W x D x H)	33 x 46 x 20 cm (13 x 18 x 8")	Real-time PCR upgrade	6-channel, 5-color CFX96 or 5-channel, 4-color CFX384 optical reaction module	
Weight	10 kg (23 lb)	Instant incubation	Yes	
Temperature control modes	Calculated and block			
PCR license	Yes			
<b>Reaction Modules</b>				
Sample capacity	<b>96-Well Fast</b> 96 x 0.2 ml tubes or 1 x 96-well plate	<b>96-Deep Well</b> 96 x 0.2 ml tubes, 48 x 0.5 ml tubes, or 1 x 96-well plate	<b>Dual 48/48 Fast</b> 2 x 48 x 0.2 ml tubes or 2 x 48-well plates	<b>384-Well</b> 1 x 384-well plate
Maximum ramp rate	5°C/sec	2.5°C/sec	4°C/sec	2.5°C/sec
Average ramp rate	3.3°C/sec	2°C/sec	3°C/sec	2°C/sec
Temperature range	0–100°C	0–100°C	0–100°C	0–100°C
Temperature accuracy	±0.2°C of programmed target at 90°C	±0.2°C of programmed target at 90°C	±0.2°C of programmed target at 90°C	±0.2°C of programmed target at 90°C
Temperature uniformity	±0.4°C well-to-well within 10 sec of arrival at 90°C	±0.4°C well-to-well within 10 sec of arrival at 90°C	±0.4°C well-to-well within 10 sec of arrival at 90°C	±0.4°C well-to-well within 10 sec of arrival at 90°C
Gradient capability	Yes	Yes	Yes	Yes
<b>Gradient</b>				
Gradient range	30–100°C			
Temperature differential range	1–24°C			



**Quick and easy protocol programming.** The protocol autowriter in the cyclers's onboard software can automatically suggest a fast temperature protocol based on input parameters. Suggested protocol is based on standard PCR guidelines, with hot-start, initial denaturation, annealing, and extension steps. Further reductions of run times are achieved by minimizing the number of steps and cycles, incubation times, and temperature differentials.



**Rapid arrival at target temperature and superior uniformity.** Graph shows temperature measured by probes in 15 wells across the sample block of a C1000 Touch thermal cycler. Traces are nearly indistinguishable due to the tight uniformity. Note the consistent ramp rate throughout heating and cooling. 1000-series thermal cyclers exhibit high average ramp rates, rapid settling time, and tight thermal uniformity throughout the ramp, resulting in rapid arrival at target temperature and enabling faster protocol run times.



**Multi-instrument control.** The C1000 Touch cycler can control multiple thermal cyclers using a single interface.

## Ordering Information

Catalog #	Description
184-1100	<b>C1000 Touch Thermal Cycler Chassis</b> , includes USB flash drive, power cord; does not include reaction module
185-1148	<b>C1000 Touch Thermal Cycler with Dual 48/48 Fast Reaction Module</b> , includes C1000 Touch thermal cycler chassis, dual 48/48 fast reaction module, USB flash drive
185-1196	<b>C1000 Touch Thermal Cycler with 96-Well Fast Reaction Module</b> , includes C1000 Touch thermal cycler chassis, 96-well fast reaction module, USB flash drive
185-1197	<b>C1000 Touch Thermal Cycler with 96-Deep Well Reaction Module</b> , includes C1000 Touch thermal cycler chassis, 96-deep well reaction module, USB flash drive
185-1138	<b>C1000 Touch Thermal Cycler with 384-Well Reaction Module</b> , includes C1000 Touch thermal cycler chassis, 384-well reaction module, USB flash drive
184-0148	<b>Dual 48/48 Fast Reaction Module</b> , independent dual 48-well reaction module, fits C1000™, C1000 Touch, and S1000™ thermal cyclers, gradient enabled
184-0196	<b>96-Well Fast Reaction Module</b> , fits C1000, C1000 Touch, and S1000 thermal cyclers, gradient enabled
184-0197	<b>96-Deep Well Reaction Module</b> , fits C1000, C1000 Touch, and S1000 thermal cyclers, gradient enabled
184-0138	<b>384-Well Reaction Module</b> , fits C1000, C1000 Touch, and S1000 thermal cyclers, gradient enabled
184-5096	<b>CFX96 Optical Reaction Module</b> , for use with C1000 Touch thermal cycler chassis, includes CFX Manager™ software, license for qbase <sup>PLUS</sup> software, communication cable, reagents, consumables
184-5384	<b>CFX384 Optical Reaction Module</b> , for use with C1000 Touch thermal cycler chassis, includes CFX Manager software, license for qbase <sup>PLUS</sup> software, communication cable, reagents, consumables
170-8870	<b>iTaq™ DNA Polymerase</b> , 5 U/μl
172-5301	<b>iProof™ High-Fidelity DNA Polymerase</b> , 2 U/μl, 100 U

Windows is a trademark of Microsoft Corporation.

Notice regarding Bio-Rad thermal cyclers and real-time systems:

Purchase of this instrument conveys a limited non-transferable immunity from suit for the purchaser's own internal research and development and for use in human in vitro diagnostics and all other applied fields under U.S. Patent Number 5,475,610 (Claims 1, 44, 158, 160-163, and 167 only), or corresponding claims in its non-U.S. counterpart, owned by Applera Corporation. No right is conveyed expressly, by implication, or by estoppel under any other patent claim, such as claims to apparatus, reagents, kits, or methods such as 5' nuclease methods. Further information on purchasing licenses may be obtained by contacting the Director of Licensing, Applied Biosystems, 850 Lincoln Centre Drive, Foster City, California 94404, USA.

Bio-Rad's real-time thermal cyclers are licensed real-time thermal cyclers under Applera's United States Patent Number 6,814,934 B1 for use in research, human in vitro diagnostics, and all other fields except veterinary diagnostics.

Bio-Rad's thermal cyclers and real-time thermal cyclers are covered by one or more of the following U.S. patents or their foreign counterparts owned by Eppendorf AG: U.S. Patent Numbers 6,767,512 and 7,074,367.

Practice of the patented 5' Nuclease Process requires a license from Applied Biosystems. The purchase of these products includes an immunity from suit under patents specified in the product insert to use only the amount purchased for the purchaser's own internal research when used with the separate purchase of Licensed Probe. No other patent rights are conveyed expressly, by implication, or by estoppel. Further information on purchasing licenses may be obtained from the Director of Licensing, Applied Biosystems, 850 Lincoln Centre Drive, Foster City, California 94404, USA.



**BIO-RAD**

**Bio-Rad  
Laboratories, Inc.**

Life Science  
Group

Web site [www.bio-rad.com](http://www.bio-rad.com) USA 800 424 6723 Australia 61 2 9914 2800 Austria 01 877 89 01 Belgium 09 385 55 11 Brazil 55 11 5044 5699  
Canada 905 364 3435 China 86 21 6169 8500 Czech Republic 420 241 430 532 Denmark 44 52 10 00 Finland 09 804 22 00  
France 01 47 95 69 65 Germany 089 31 884 0 Greece 30 210 9532 220 Hong Kong 852 2789 3300 Hungary 36 1 459 6100 India 91 124 4029300  
Israel 03 963 6050 Italy 39 02 216091 Japan 03 6361 7000 Korea 82 2 3473 4460 Mexico 52 555 488 7670 The Netherlands 0318 540666  
New Zealand 64 9 415 2280 Norway 23 38 41 30 Poland 48 22 331 99 99 Portugal 351 21 472 7700 Russia 7 495 721 14 04  
Singapore 65 6415 3188 South Africa 27 861 246 723 Spain 34 91 590 5200 Sweden 08 555 12700 Switzerland 061 717 95 55  
Taiwan 886 2 2578 7189 Thailand 800 88 22 88 United Kingdom 020 8328 2000